

SOCIETY OF CHARTERED SURVEYORS IRELAND

ANNUAL



REPORT

2018



CONTENTS

FOREWORD	3
FUTURE OF THE PROFESSION	6
MEETING THE NEEDS OF TOMORROW	7
THOUGHT LEADERSHIP	8
SUSTAINABILITY	9
DRIVERS OF CHANGE	10
VOICE OF THE PROFESSION	11
RESOURCES FOR THE PUBLIC	12
RAISING AWARENESS	13
TRUSTED EXPERTS	14
REACHING ALL MEMBERS	15
REGIONAL CONNECTIVITY	16
CONNECTING WITH KNOWLEDGE	17
TRAVELLING TO YOU	18
SPREADING OUR WINGS	19
GLOBAL KNOWLEDGE AT YOUR FINGERTIPS	20
VALUE OF CHARTERED	21
COMMITMENT TO DEVELOPMENT	22
PUBLIC ASSURANCE	23
PROTECTING YOUR PROFESSION	24
MANAGING COMPLIANCE	25
ORGANISATION	26
A BIG THANK YOU	27
ACCOUNTS	32
WORKING WITH OTHER ORGANISATIONS	34
OUR VALUES	35

Board of Directors: Des O’Broin, President; Johanna Gill, Senior Vice President; Micheál Mahon, Second Vice President; Colin Bray, Immediate Past President; and Alan Hardy, Honorary Treasurer.

Director General/Company Secretary: Áine Myler.

OUR SUCCESS IS YOUR SUCCESS

EXPERT COLLABORATION WORKS

It has been an honour to serve as President of the Society of Chartered Surveyors Ireland. I have been blown away by the sheer scale of the work undertaken and also the quality of thinking, dedication to members and passion for the future of our profession. The Society brings together expertise from the full life cycle of the built environment. We offer an exceptional perspective for policymakers in Ireland from addressing housing issues to

economic growth and education, etc. As an organisation, we must remain politically neutral – but not policy neutral. We champion recommendations gained from considered professional, independent analysis.

I'm particularly proud of the work done by members and examples include the following: our 'Rejuvenating Ireland's Small Town Centres' report made clear recommendations on the value of developing the rural regions; our campaign to change permitted unit sizes in planning, which now allows greater height and density in our larger population centres, as well as the clarity needed for quicker decisions; and, our 'Sinking Funds in Apartments' report was another collaboration between our Chartered Property Management and Chartered Building Surveyors in this growing area of housing.

Impact of volunteerism

Once again we have seen the incredible impact that volunteer members deliver through attending and hosting events, giving up their free time for professional groups, inputting on our policy agenda, delivering CPD courses and many more activities. Fellow members, on behalf of myself and the Board, I'd like to say a very big thank you for everything you do. I would like to personally thank the team at Society headquarters led by Director General, Áine Myler, for their support and determination. They work tirelessly on our behalf to help us continue to innovate and develop our sector.

Thank you for the opportunity to lead this great organisation. The successes that we present in this Annual Report are your successes. When we combine our expertise as members, we can change the mindset of our clients, policymakers, the public and ourselves for the better.



Des O'Broin
President

RESHAPING THE SOCIETY

LISTENING TO MEMBERS AND TAKING ACTION

It has been a great year promoting the important roles of Chartered Surveyors. I've had the opportunity to speak on your behalf to ministers, secretary generals, regulators, and industry and global standards bodies about the knowledge and expertise within this Society. I've seen how we are moving from offering service-based expertise to industry-wide insight as trusted advisors.

In this Annual Report, we have presented the Society's work across four broad topics that we have used throughout this year to communicate the value of the Society to the members, industry stakeholders and the public.

These are:

- Future of the Profession;
- Voice of the Profession;
- Regional Connectivity; and,
- Value of Chartered.

Listening to members

The Society has had a strong investment focus and members will see a direct benefit. The renovation works at 38 Merrion Square created more meeting spaces for members, and we developed and deployed a new member relationship management system. We believe these investments will help us to deliver better member service, communications and guidance.

Taking heed of the feedback from our membership survey, we fundamentally reviewed our education programme. While the decision has been made to wind down the direct provision of third-level courses, new partnership models will actually increase the number of courses with much greater regional availability and a higher number of students, with defined routes to membership. We will focus our energies on what members have asked for: upskilling to support them at each stage of their career and business journey. This is my last Annual Report as Director General, but I am proud to retain my membership of this great Society. The industry is changing and the Society is responding in the interests of our members. Change is a process, and I am proud of how we have contributed to reshaping the Society during my time as Director General. I would encourage everyone to continue to volunteer, attend or share ideas as this is your Society.

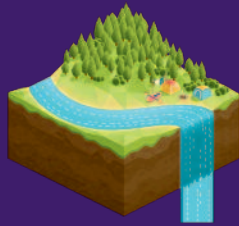


Áine Myler
Director General

A CLOSER LOOK

THIS ANNUAL REPORT DRAWS TOGETHER SOME
OF THE HIGHLIGHTS OF THIS YEAR.

WHY CHARTERED SURVEYORS MATTER FOR LAND, PROPERTY AND CONSTRUCTION IN IRELAND



1.7 MILLION

HOMES IN IRELAND



€116 BILLION

TO BE INVESTED
UNDER
IRELAND 2040



ONE IN FOUR

DUBLINERS NOW LIVE IN AN APARTMENT



CORPORATE INVESTORS SPENT MORE THAN

€1.1 BILLION

ON 2,923 UNITS IN IRELAND IN 2018



IN 2018, THE SOCIETY HAD



MEMBERS



80

NEW CHARTERED SURVEYORS

318 VOLUNTEERS



625

ATTENDEES AT
FOUR SOCIETY
CONFERENCES

WE ACHIEVED



€24,000 IN CHARITABLE DONATIONS

4,000 REFERRALS TO MEMBERS FROM DIGITAL ADVERTISING



THE PRODUCTION OF

10

POLICY AND CONSUMER REPORTS



90,380 CPD

HOURS LOGGED BY MEMBERS



THE CLOSURE AFTER INVESTIGATION OF



16

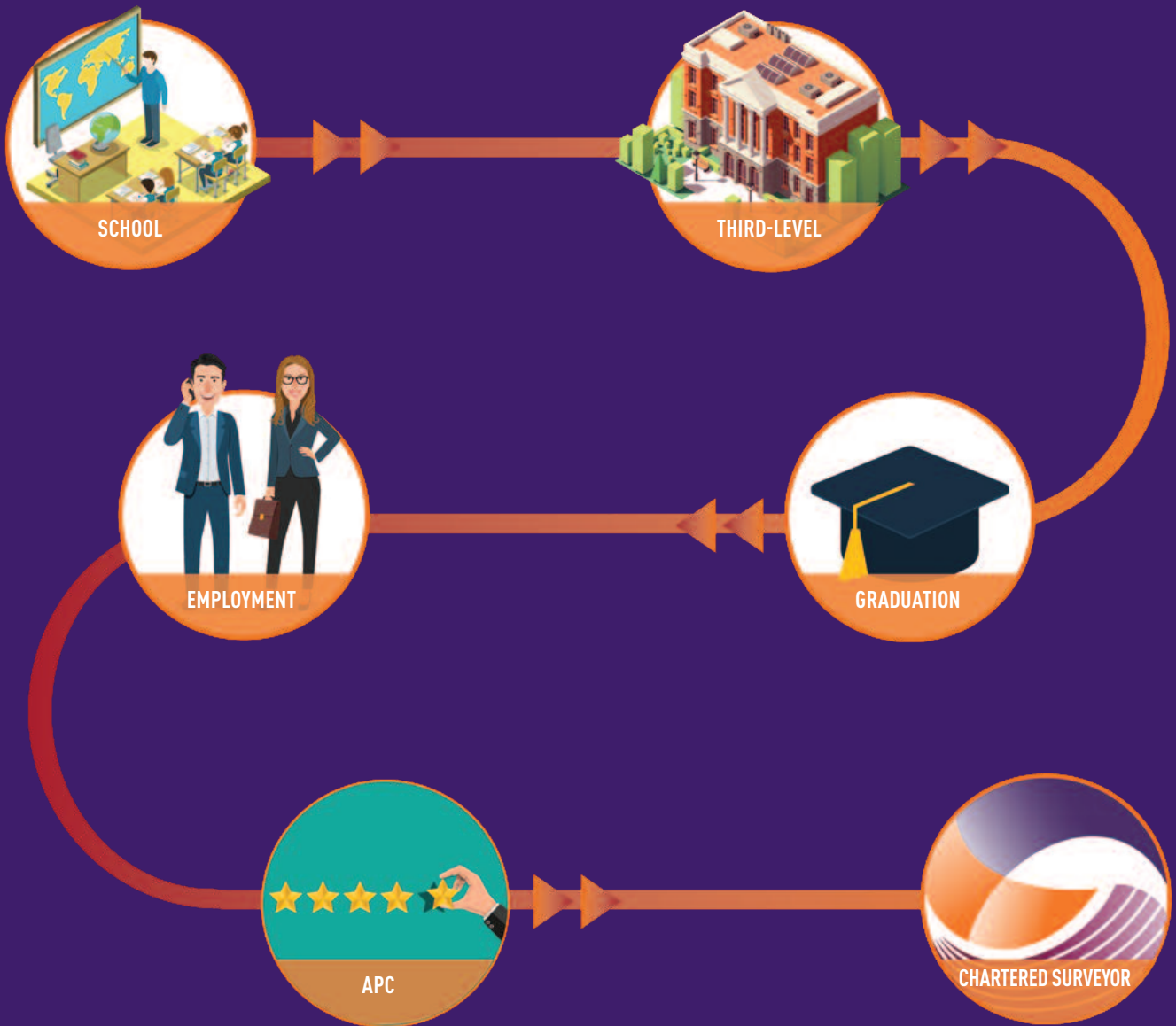
COMPLAINTS AGAINST MEMBERS

THE RESOLUTION OF COMPLAINTS BETWEEN PARTIES

9



FUTURE OF THE PROFESSION



THERE IS A CLEAR PATHWAY TO A CAREER
AS A CHARTERED SURVEYOR

MEETING THE NEEDS OF TOMORROW

THE SOCIETY'S EMPLOYMENT SKILLS REPORT STATED THAT BETWEEN 2018 AND 2021, IT IS LIKELY THAT THERE WILL BE DEMAND FOR AN ADDITIONAL 3,739 SURVEYING PROFESSIONALS.



Surveying group	Projected additional staff required 2018-2021
Quantity Surveying	1,652
Building Surveying	210
Property Surveying	1,640
Land Surveying	237
Projected additional staff required	3,739

Third-level Programme Area	2018 enrolment
Quantity Surveying	853
Building Surveying	93
Property Surveying	530
Land Surveying	101
Enrolment on surveying programmes	1,577

Surveying group	Projected shortage 2018-2021
Quantity Surveying	799
Building Surveying	117
Property Surveying	1,110
Land Surveying	136
Projected shortage	2,162

THOUGHT LEADERSHIP

THE SOCIETY STAGED FOUR MAJOR CONFERENCES
THIS YEAR: SURVEY IRELAND; PMFM;
PROPTECH; AND, CONNECTED.

WE CAN'T AFFORD TO KEEP OUR
HEADS IN THE SAND WHEN IT
COMES TO TECHNOLOGY.

OSi CEO, Colin Bray.

625

Attendees for

4

conferences

PROPTech & SMART
CONSTRUCTION
CONFERENCE 2018



Delegates
were in attendance



Seven
exhibitors

SUSTAINABILITY

THE THEME OF OUR TIME
"I AM HERE TO TELL YOU OUR HOUSE IS ON FIRE"
- GRETA THUNBERG

THE SOCIETY ESTABLISHED A WORKING GROUP IN 2018 TO IMPLEMENT ITS SUSTAINABILITY AGENDA.

350,000



350,000 homes across Ireland

have received SEAI grants for energy improvements (*Irish Independent*)

Insulation

is the single best way to improve home energy



nZEB

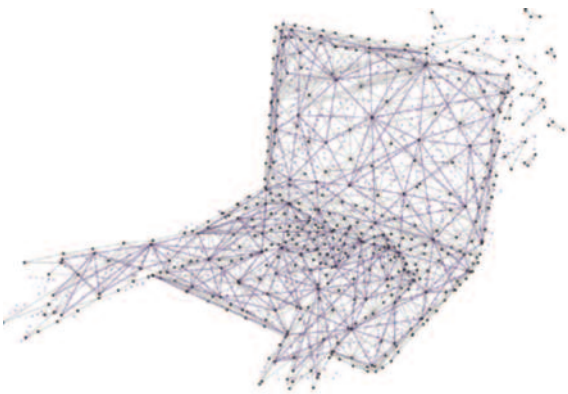
From 2021 all commercial buildings will need to be nearly Zero Energy Buildings

DRIVERS OF CHANGE

BUILDING INFORMATION MODELLING ALLOWS PARTICIPANTS
IN THE BUILDING PROCESS TO COLLABORATE
MUCH MORE EFFECTIVELY.

**BIM IS PERHAPS THE MOST TOPICAL ISSUE IN
CONSTRUCTION THROUGHOUT THE WORLD AT PRESENT,
AS IT IS ASSOCIATED WITH SOLVING SO MANY OF THE
PRESENT CONCERNS IN OUR INDUSTRY.**

Dr Alan Hore (2017 BIM in Ireland Report).



Building Information Modelling (BIM)

is a 3D model-based process that gives architecture, engineering, and construction professionals the tools to more efficiently plan, design, construct, and manage buildings and infrastructure (Autodesk.com)



76% of respondents

expressed confidence in their organisation's BIM skills and knowledge (Irish Digital Transition Survey)



Two programmes

from Enterprise Ireland:

- BIM-Enable; and,
- BIM-Implement

VOICE OF THE PROFESSION

YOUR VOICE IN IRISH BUSINESS, POLITICAL AND PUBLIC LIFE.



SCSU/PwC Construction Market Monitor 2018



Overwhelming positivity for the year ahead

90% expect increases in activity

According to a PwC Survey of the Construction Industry, a record 90% of respondents expect the construction sector to experience an increase in activity in 2018. This is up from 85% in 2017. The survey also found that 75% of respondents expect the construction sector to experience an increase in activity in 2018. This is up from 70% in 2017.



Case Study 1 Westport zoo: An Integrated Action Plan for Westport

The town of Westport is a beautiful coastal town with a rich history and a vibrant community. The Westport Zoo is a key attraction for the town and a source of pride for the community. The Integrated Action Plan for Westport aims to improve the zoo and the town's infrastructure, creating a more attractive and sustainable destination for visitors and residents alike.

Case Study 2 Clonakilty's Elected Mayor

The Clonakilty Municipality is a beautiful town with a rich history and a vibrant community. The Clonakilty Mayor is a key figure in the town and a source of pride for the community. The Clonakilty Mayor's Integrated Action Plan aims to improve the town and the community, creating a more attractive and sustainable destination for visitors and residents alike.



REJUVENATING Ireland's small town centres
A RICS Action



RESOURCES FOR THE PUBLIC

MAKING OUR ELECTRONIC PRESENCE
PROFESSIONAL AND RELEVANT



12,000,000

click-throughs to scsi.ie from
MyHome.ie partnership



4,000

referrals generated from
myHome.ie



3,174

daily visits to scsi.ie



138,944

YouTube ad views

RAISING AWARENESS

CHANNELLING OUR COMMUNICATIONS



53,512
views on Facebook



1,353,693
Facebook ad views



259,202
unique views



20,868
Twitter impressions



2,745
new followers

TRUSTED EXPERTS

CHARTERED SURVEYORS ARE THE TRUSTED EXPERTS CONSULTED TO PROVIDE ANSWERS IN *THE IRISH TIMES* PROPERTY CLINIC



65 appearances in *The Irish Times* Property Clinic

- Landlord and Tenant issues
- Boundaries
- Owners' Management Companies
- CPO issues
- Home improvement issues
- Insulation
- Neighbour issues
- Structural problems
- Planning permission



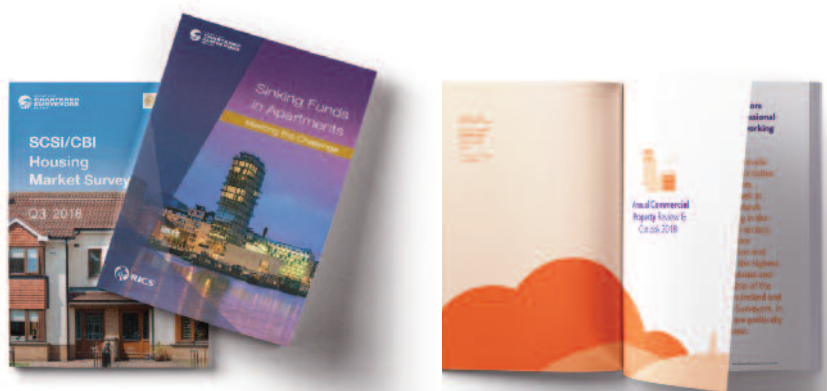
REACHING ALL MEMBERS

STATING THE FACTS OF OUR INDUSTRY



Professional Reports

- Commerical Property Review and Outlook **Annual**
- Residential Property Review and Outlook **Annual**
- Construction Tender Price Index **Quarterly**
- Regional Residential Property Reports **Annual**
- Teagasc/SCSI Agri-Land Review and Outlook **Annual**
- Employment Opportunities and Future Skills Requirements for Surveying 2018-2021
- Rejuvenating Ireland's Small Town Centres Report
- Apartments Sinking Funds Report
- SCSI/CBI Housing Market Report **Quarterly**
- Global Commerical Property Monitor **Quarterly**
- SCSI/PwC Construction Market Monitor **Annual**



REGIONAL CONNECTIVITY

THE SOCIETY IS NATIONAL AND HAS
CONTINUED TO EXTEND ITS ACTIVITIES

28

REGIONAL
SCSI CPD
EVENTS

13

SOCIETY/PSRA
REGIONAL CPD
EVENTS

INCREASED VISITS
TO TRANSITION
YEAR STUDENTS

INCREASED VISITS
TO THIRD-LEVEL
COLLEGES



CONNECTING WITH KNOWLEDGE

SERVING OUR MEMBERSHIP WITH A RANGE OF REGIONAL EVENTS



2,360

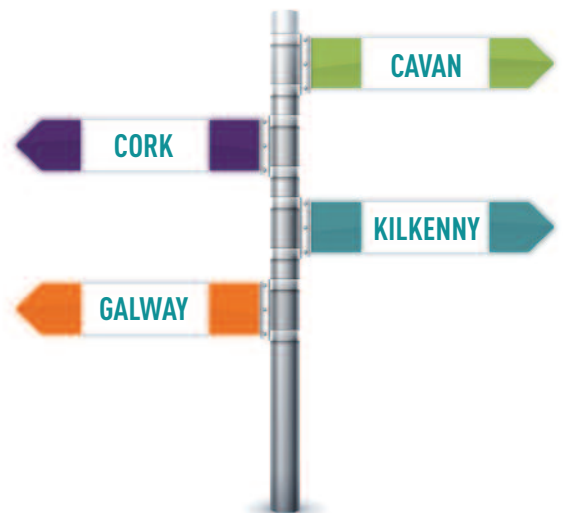
Attendees at

5

Regional dinners

28 regional CPD events

Landlord and Tenant	Regulations
BCAR	PCIT
Sustainability	Sustainability
Valuations	Dispute Avoidance
RedBook	Building Defects
PSRA	Arbitration
APC	Financial Management
Dilapidations	Residential
BIM	Tenancy Act
Building	CPO



TRAVELLING TO YOU

PSRA EVENTS
TRAVELLED TO YOU IN 2018



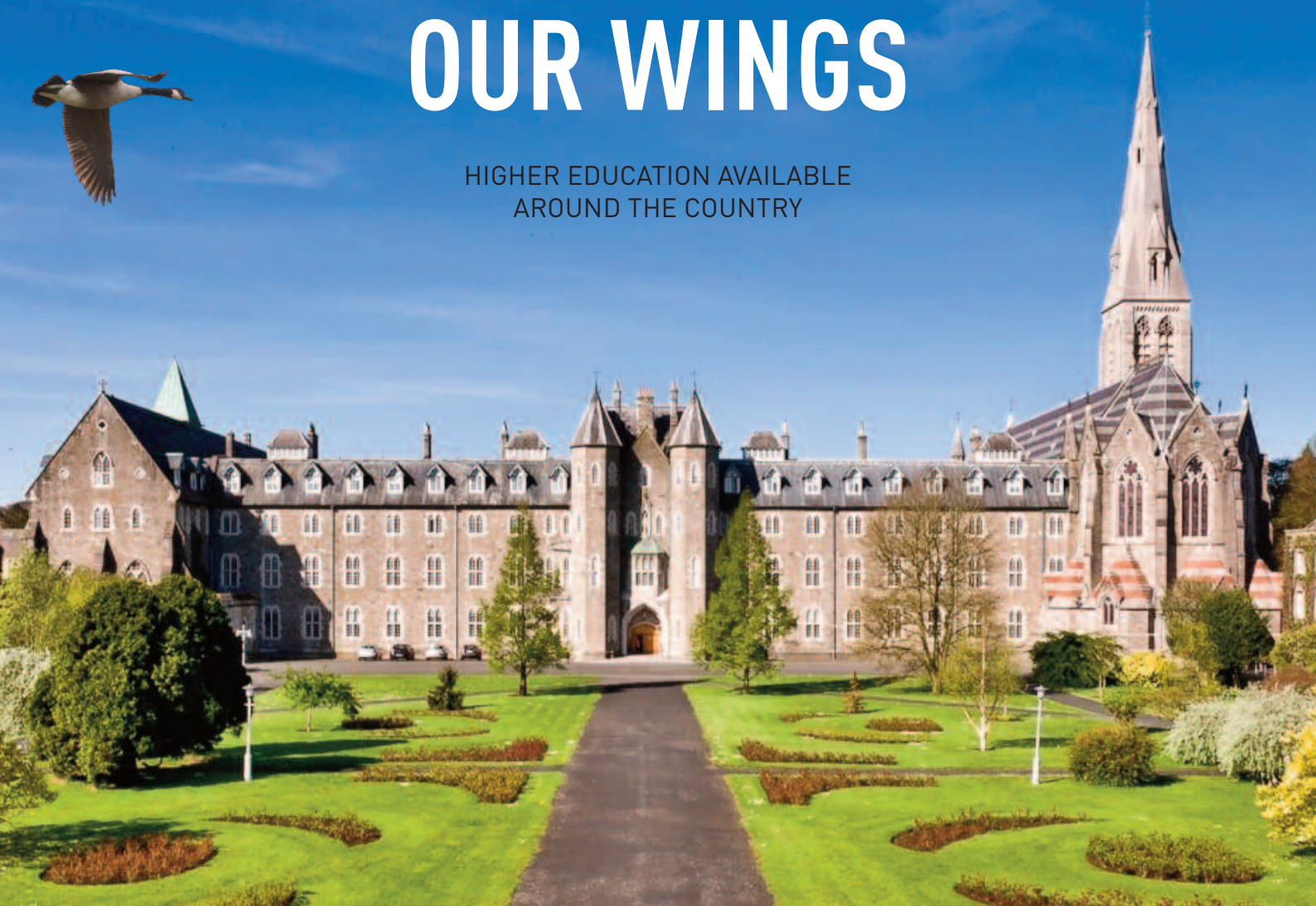
1,947 MEMBERS ATTENDED
9,735 CPD HOURS
13 LOCATIONS

CORK CITY GALWAY ATHLONE DUBLIN
CHARLEVILLE WATERFORD TRALEE
LIMERICK KILKENNY PORTLAOISE
LETTERKENNY DUNDALK NAVAN



SPREADING OUR WINGS

HIGHER EDUCATION AVAILABLE
AROUND THE COUNTRY



Society sponsored the Institute of Guidance Counsellors National Conference 2018 and 2019 in Letterkenny, Donegal.



SCSI and IT Sligo
provide new online Higher Certificate in Property Services and Facilities Management



University of Maynooth
Accreditation of first university programme in 2018
MSc in Geographical Information Systems and Remote Sensing



New accreditations
IT Carlow

GLOBAL KNOWLEDGE AT YOUR FINGERTIPS

CPD DIRECT TO YOUR DESKTOP



Is your Residential
Tenancy Agreement
Fit for Purpose? –
351 Views

Business
Continuity
Management –
132 Views

HR Series –
Performance
Management –
149 Views

Implementation
of Fire
Precautions –
258 Views

Introduction
to Home
Performance
Index –
253 Views

HR Series –
Employment Law –
194 Views



Drones –
Legal issues –
315 Views

The Implications
of BCAR on
Managing Projects –
310 Views

VALUE OF CHARTERED

STANDARDS ARE AT THE HEART OF BEING CHARTERED –
MEMBERS AND THE PUBLIC EXPECT THOSE STANDARDS
TO BE MAINTAINED AND PROTECTED



This is achieved through:



continuous professional
development (CPD);



professional assessment;
and,

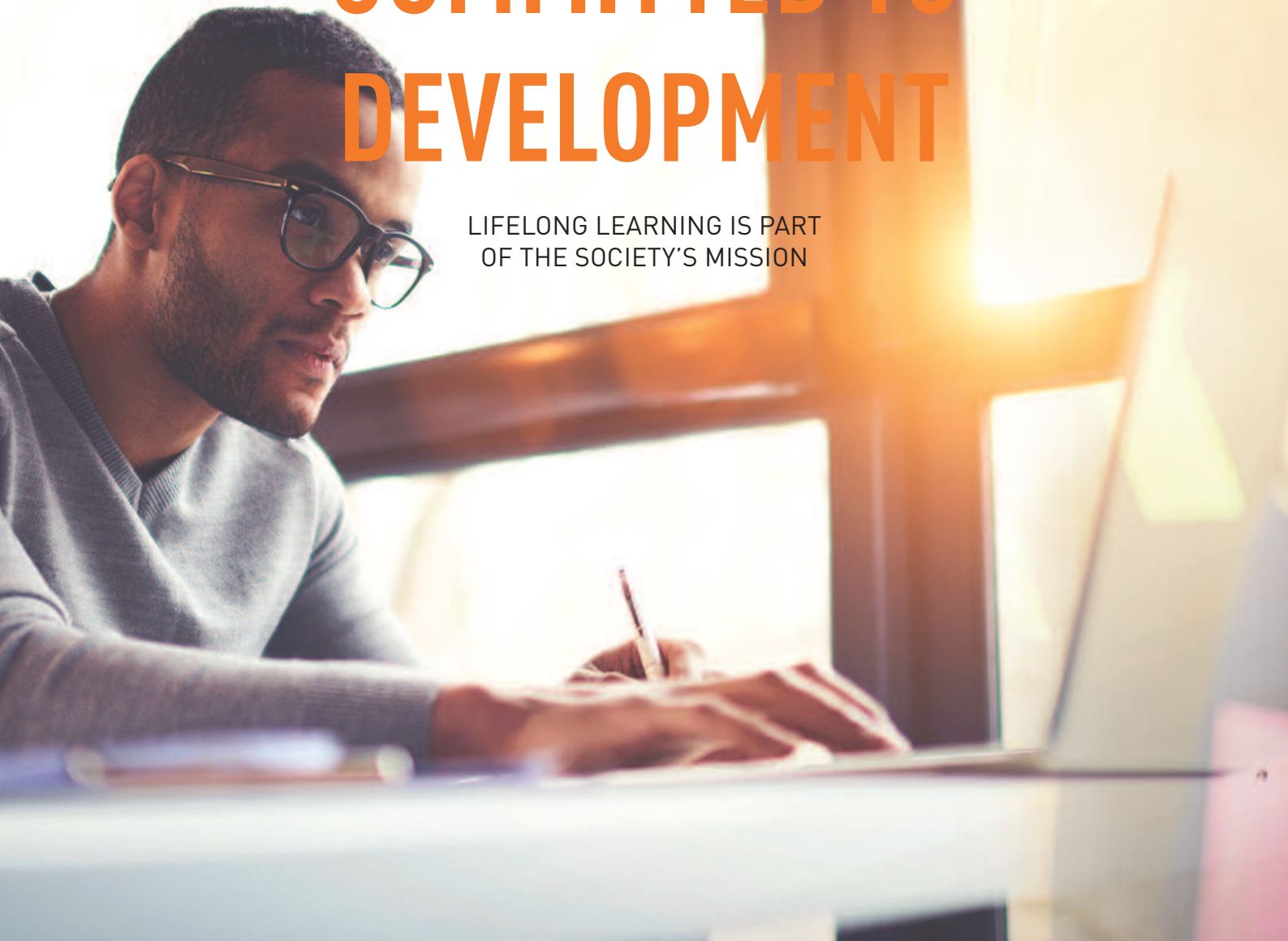


fair and robust
disciplinary processes

THE SCSJ IS THE STATE-APPOINTED BODY FOR THE REGISTRATION
AND REGULATION OF BUILDING AND QUANTITY SURVEYORS.

COMMITTED TO DEVELOPMENT

LIFELONG LEARNING IS PART OF THE SOCIETY'S MISSION



90,380

Total CPD hours recorded by members for 2018



2,476

Completed and recorded required 20 hours of CPD

REDBOOK VALUATION GDPR
COMMERCIAL MANAGEMENT
PSRA CPD BCAR LAW
SAFETY BUSINESS

Key CPD topics

The most popular topics for CPD for members

PUBLIC ASSURANCE

A NEW AUDIT REGIME IS IN PLACE FOR VALUERS



First-year quality assurance audits of registered valuers by an Irish-based regulatory valuer, Paddy Darmody.

31

Members and

29

firms audited under VR scheme



Audits are a value differentiator for Registered Valuers expected to meet the high-quality standards expected in line with International Valuation Standards Council.

PROTECTING YOUR PROFESSION

A FAIR AND TRANSPARENT COMPLAINTS PROCESS



Two appeal hearings held – Professional Conduct Committee (PCC) decisions against member upheld

21 complaints received 2018 - 2019

Top complaint issues – ethical behaviour, competence, service issues, co-operation with the Society, CPD, advertising, conduct external to professional organisation

Four complaints under investigation by Director of Regulation

16 complaints investigated by Director of Regulation and are now closed

One case referred by the Director of Regulation to the PCC

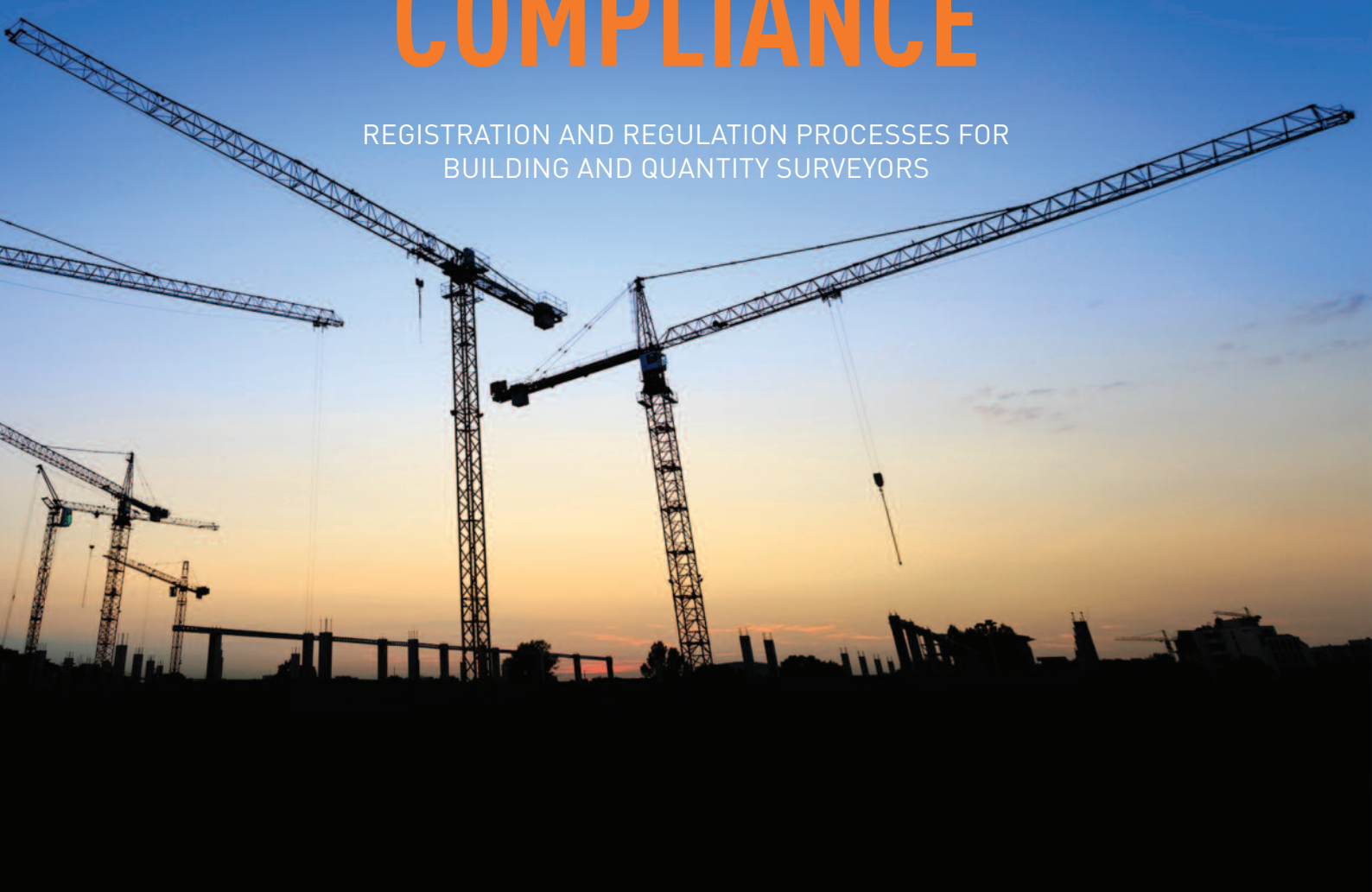
Nine cases closed as agreement reached by parties

Four cases – decision of Director of Regulation was not to refer to PCC

Three cases on hold pending external legal/alternative body outcome

MANAGING COMPLIANCE

REGISTRATION AND REGULATION PROCESSES FOR BUILDING AND QUANTITY SURVEYORS



Two statutory enquiries
dealt with complaints against
Building Surveyors



The SCS

is the State-appointed body for the registration and regulation of Building and Quantity Surveyors.



Registrar
Áine Myler



Secretariat
Gwen Wilson



349
Building Surveyors
currently registered

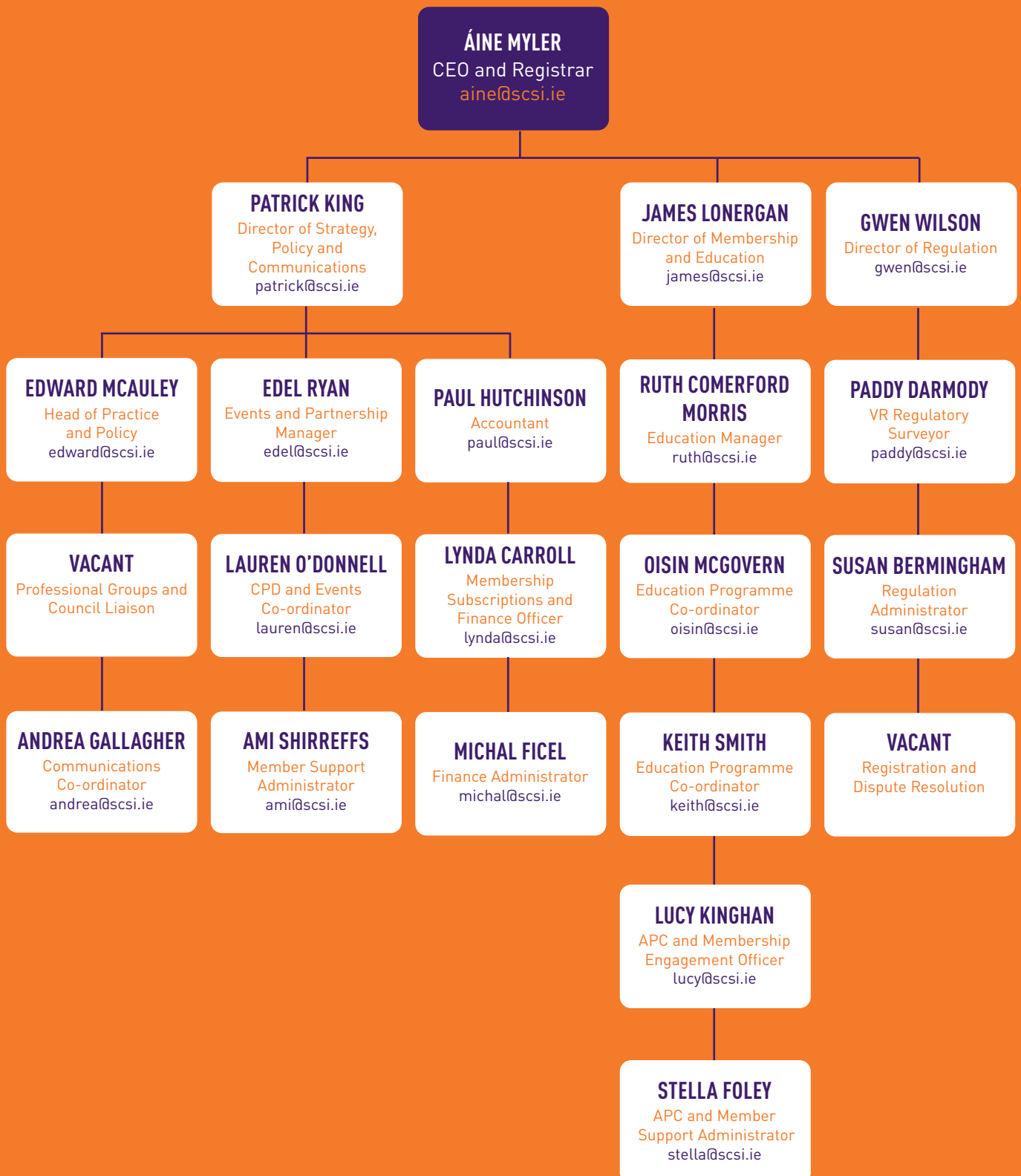
1,164
Quantity Surveyors
currently registered

11
Admission Board
and Technical
Assessment
Board meetings

141
Notices issued for
illegal use of a
protected title

ORGANISATION

WE ARE STRUCTURED TO SERVE



A BIG THANK YOU

THE SOCIETY IS GRATEFUL TO EVERYONE
WHO GAVE THEIR TIME VOLUNTARILY IN 2018.



Willie Aherne, FSCSI, FRICS
Peter Anglim, MSCSI, MRICS
Brendan Arrigan, FSCSI, FRICS
Sean Aylward, MSCSI, MRICS
Brian Bagnall, FSCSI, FRICS
Declan Bagnall, MSCSI, MRICS
Sally Bailey, MSCSI, MRICS
Alan Baldwin, MSCSI, MRICS
Jeremy Barnes, MSCSI, MRICS
Avril Behan, FSCSI, FRICS
Denis Bergin, FSCSI, FRICS
Roger Berkeley, FSCSI, FRICS
Shane Black, MSCSI, MRICS
Mark Peter Bourke, FSCSI, FRICS
Liam Boylan, FSCSI, FRICS
Fergal Bradley, FSCSI, FRICS
Kevin Brady, MSCSI, MRICS

Paul Brain, MSCSI, MRICS
Colin Bray, FSCSI, FRICS
John Brennan, MSCSI, MRICS
Niall Brereton, MSCSI, MRICS
Jacqueline Brett, MSCSI, MRICS
Samuel Buck, MSCSI, MRICS
Conor Byrne
Des Byrne, FSCSI, FRICS
Emer Byrne, MSCSI, MRICS
Philip Byrne, MSCSI, MRICS
Conor Cahalane, FSCSI, FRICS
John Cairns, MSCSI, MRICS
Stephen Cairns, MSCSI, MRICS
Aonghus Callanan, MSCSI, MRICS
Edward Campbell, MSCSI, MRICS
Paul Campbell, MSCSI, MRICS
Edward Carey, FSCSI, FRICS

Gillian Carey, MSCSI, MRICS
Anne Carroll, MSCSI, MRICS
Patrick Carter, MSCSI, MRICS
Anne Carton, FSCSI, FRICS
Rosemary Casey, MSCSI, MRICS
Orlagh Cawley
Colin Cleary, FSCSI, FRICS
Michael Cleary, FSCSI, FRICS
Anthony Cloonan, MSCSI, MRICS
Gary Comerford, MSCSI, MRICS
Ruth Comerford-Morris
Catherine Connolly, MSCSI, MRICS
Siobhan Convery, FSCSI, FRICS
John Corridan, MSCSI, MRICS
Paul Corrigan, FSCSI, FRICS
John Costello, FSCSI, FRICS
John Costello, FSCSI, FRICS



Sporting endeavours

The Society's sporting and fund raising activities are always brilliantly supported.

Seamus Costello, FSCSI, FRICS
 John Craddock, MSCSI, MRICS
 Thomas Cronin, MSCSI, MRICS
 Claire Crowley Cullen, MSCSI, MRICS
 Anthony Cullen, MSCSI, MRICS
 Tom Cullen
 Martin Cummins, MSCSI, MRICS
 Peter Cunningham, MSCSI, MRICS
 Niall Curley, MSCSI, MRICS
 D F Curran, MSCSI, MRICS
 John Curtin, FSCSI, FRICS
 Nigel Cusack, MSCSI, MRICS
 Berian Davies, MSCSI, MRICS
 John Dawson, FSCSI, FRICS
 Muiris de Buitléir
 Niall Deegan, MSCSI, MRICS
 Ed Dempsey, MSCSI, MRICS
 Steven Denehan
 Allen Devine, MSCSI, MRICS
 Ronan Diamond, MSCSI, MRICS
 Eoin Dillon, FSCSI, FRICS

John Doherty, MSCSI, MRICS
 Sean Downey, MSCSI, MRICS
 Christopher Duffy, MSCSI, MRICS
 Peter Duignan, MSCSI, MRICS
 Mark Dunleavy, MSCSI, MRICS
 Paul Dunne, FSCSI, FRICS
 T.A. Dunne, FSCSI, FRICS
 Dermot Durack, FSCSI, FRICS
 John Elliott
 Lily Ellis, MSCSI, MRICS
 Oliver Farrell, FSCSI, FRICS
 Paul Farrelly, MSCSI, MRICS
 Michael Ferry, MSCSI, MRICS
 Barry Finnegan, Assoc SCSi
 Katherine Flattery, MSCSI, MRICS
 Helen Fletcher, FSCSI, FRICS
 Gregory Flynn, FSCSI, FRICS
 Eileen Foley, Assoc SCSi
 Thomas Freeman, MSCSI, MRICS
 Edward Frisby, MSCSI, MRICS
 Andrea Gallagher

Fergus Gallagher, MSCSI, MRICS
 Isabelle Gallagher, MSCSI, MRICS
 Eamon Gavigan, MSCSI, MRICS
 Michael Gavigan, FSCSI, FRICS
 Johanna Gill, MSCSI, MRICS
 Brian Gilson, MSCSI, MRICS
 Paul Good, FSCSI, FRICS
 Ciarán Gorham, MSCSI, MRICS
 Christopher Grady, MSCSI, MRICS
 Leo Gray, MSCSI, MRICS
 Mark Green
 Margo Grogan, MSCSI, MRICS
 Niall Guerin, MSCSI, MRICS
 Carlo Hanrahan, FSCSI, FRICS
 Alan Hardy, FSCSI, FRICS
 Ann-Marie Hardiman
 Frank Harrington, MSCSI, MRICS
 Gordon Henderson
 Donal Hennessy, MSCSI, MRICS
 John Henry, MSCSI, MRICS
 Eloise Heron, FSCSI, FRICS



Education and social

The Society is active in all spheres of professional education, and its social events are highlights of the calendar.

Declan Hickey, MSCSI, MRICS
 Vincent Hickey, MSCSI, MRICS
 Robert Hoban, MSCSI, MRICS
 Conor Hogan, MSCSI, MRICS
 Michael Hogan, MSCSI, MRICS
 David Holland
 Kevin Hollingsworth, FSCSI, FRICS
 Edward Holohan, MSCSI, MRICS
 Alan Hore, MSCSI, MRICS
 Claude Howlin, MSCSI, MRICS
 Paul Huberman, MSCSI, MRICS
 Alan Isdell, MSCSI, MRICS
 Karol Jackson, FSCSI, FRICS
 Norman Jackson, MSCSI, MRICS
 Kevin James, FSCSI, FRICS
 Paul Johnston, MSCSI, MRICS
 Patrick Jordan, FSCSI, FRICS
 Stephen Kavanagh, MSCSI, MRICS
 David Keane
 Ciaran Keenan, MSCSI, MRICS
 Brian Kehoe, MSCSI, MRICS

Patrick Kelleher, MSCSI, MRICS
 Daniel Kelliher
 Tomas Kelly, MSCSI, MRICS
 Michael Kelly, MSCSI, MRICS
 John Kennedy
 Frank Keohane, MSCSI, MRICS
 Yvonne Kiernan, MSCSI, MRICS
 Daire Kilkelly, MSCSI, MRICS
 Ben King, FSCSI, FRICS
 Patrick King
 Peter Kinghan, MSCSI, MRICS
 Lorcan Kirk, FSCSI, FRICS
 Margaret Kirwan
 Liam Langan, MSCSI, MRICS
 Kevin Larkin, MSCSI, MRICS
 Noel Larkin, MSCSI, MRICS
 Rory Lavelle, FSCSI, FRICS
 John Lawlor, MSCSI, MRICS
 James Lee, MSCSI, MRICS
 James Lonergan
 Oliver Long, MSCSI, MRICS

Brendan Lupton, FSCSI, FRICS
 Sabrina Mackin, MSCSI, MRICS
 Michael Madden, FSCSI, FRICS
 Declan Magee, MSCSI, MRICS
 Marcus Magnier, FSCSI, FRICS
 Micheal Mahon, MSCSI, MRICS
 Ruairi Mallon, MSCSI, MRICS
 Paul Mangan, FSCSI, FRICS
 Ausra Marcelyte
 Hugh Markey, FSCSI, FRICS
 Ciara Marron, MSCSI, MRICS
 Audrey Martin, FSCSI, FRICS
 Philip Matthews, MSCSI, MRICS
 Aidan McDonald, MSCSI, MRICS
 Edward McAuley, Assoc SCSi
 David McCarthy, FSCSI, FRICS
 Stephen McCarthy, FSCSI, FRICS
 Trevor McCarthy, MSCSI, MRICS
 Tony McCauley, MSCSI, MRICS
 Conor McCormick, FSCSI, FRICS
 Shane McCullagh, FSCSI, FRICS



Events

Society events attract expert speakers and large, motivated audiences.

Shane McDermott, MSCSI, MRICS
 Tom McDonald, MSCSI, MRICS
 Finbar McDonnell, MSCSI, MRICS
 Paul McElearney, FSCSI, FRICS
 Michael McGarry
 Mary McGarry Murphy, MSCSI, MRICS
 Brendan McGing, MSCSI, MRICS
 Eugene McGovern, FSCSI, FRICS
 Jeremiah McGrath, MSCSI, MRICS
 Ronan McGrath, MSCSI, MRICS
 Mark McGreevy, FSCSI, FRICS
 Enda McGuane, MSCSI, MRICS
 Michael McKenna, MSCSI, MRICS
 Noel McKenna, MSCSI, MRICS
 John McNally, MSCSI, MRICS
 Brian Meldon, FSCSI, FRICS
 Fergus Merriman, MSCSI, MRICS
 Charles Mitchell, FSCSI, FRICS
 Paul Mitchell, MSCSI, MRICS
 Niamh Mooney, MSCSI, MRICS
 Paul Mooney, MSCSI, MRICS

Kara Moore, FSCSI, FRICS
 Stephen Moore, Assoc SCSi
 Michael Mooring, MSCSI, MRICS
 Bryan Moran
 Paul Moran, MSCSI, MRICS
 Richard Mossop, FSCSI, FRICS
 Greg Moynan
 James Muldowney, MSCSI, MRICS
 Kenneth Mulligan, MSCSI, MRICS
 Philip Mulreid, MSCSI, MRICS
 Kevin Murphy, MSCSI, MRICS
 Liam Murphy, MSCSI, MRICS
 Peter Murphy, MSCSI, MRICS
 Raymond Murphy, MSCSI, MRICS
 Robert Murphy, MSCSI, MRICS
 Tomas Murphy, MSCSI, MRICS
 Helen Murray, FSCSI, FRICS
 Dillon Murtagh, MSCSI, MRICS
 Peter Murtagh, MSCSI, MRICS
 Áine Myler, FSCSI, FRICS
 Patrick Nestor, MSCSI, MRICS

Eugen Niculae, MSCSI, MRICS
 Alan Nolan, MSCSI, MRICS
 Karen Nolan, MSCSI, MRICS
 Margaret Nolan, MSCSI, MRICS
 Andrew Nugent, FSCSI, FRICS
 Shane O'Beirne, MSCSI, MRICS
 David O'Brien, MSCSI, MRICS
 Gabriel O'Brien, FSCSI, FRICS
 Val O'Brien, MSCSI, MRICS
 Des O'Broin, FSCSI, FRICS
 Anne O'Connor, MSCSI, MRICS
 Jerome O'Connor, FSCSI, FRICS
 Marcus O'Connor, MSCSI, MRICS
 Eoin O'Dowd, MSCSI, MRICS
 Peter O'Flynn, MSCSI, MRICS
 Andrew O'Gorman, MSCSI, MRICS
 Frank O'Grady, FSCSI, FRICS
 Paul O'Grady
 Patrick O'Hagan, FSCSI, FRICS
 Shane O'Hanlon, MSCSI, MRICS
 Ronan O'Hara, Assoc SCSi



Expert voices

The expertise of Society members is heard in a range of formats and on a wide range of topics every year.

David O'Leary, MSCSI, MRICS
 Susan O'Leary, MSCSI, MRICS
 Martin O'Malley, MSCSI, MRICS
 Pól O Maolagáin, MSCSI, MRICS
 David O'Meara, Assoc SCSi
 Martin O'Neill, FSCSI, FRICS
 Isobel O'Regan, FSCSI, FRICS
 John O'Reilly, MSCSI, MRICS
 Niamh O'Reilly, FSCSI, FRICS
 Andrew O'Rourke
 GP O'Sullivan, FSCSI, FRICS
 John O'Sullivan, MSCSI, MRICS
 Pat O'Sullivan, MSCSI, MRICS
 Gerard O'Toole, MSCSI, MRICS
 Robert Patterson, FSCSI, FRICS
 Michael Pender, MSCSI, MRICS
 David Potter, MSCSI, MRICS
 Thomas Potterton, FSCSI, FRICS
 William Patrick (Paddy) Prendergast, FSCSI, FRICS
 Anthony Quinlan, MSCSI, MRICS

Gavan Quinlan, MSCSI, MRICS
 Jonathan Quinn, MSCSI, MRICS
 Rowena Quinn, Assoc SCSi
 Andrew Ramsey, MSCSI, MRICS
 Krystyna Rawicz, FSCSI, FRICS
 David Reidy, MSCSI, MRICS
 Max Reilly, FSCSI, FRICS
 Peter Reilly, MSCSI, MRICS
 Declan Ryan, MSCSI, MRICS
 Edel Ryan
 John Ryan, MSCSI, MRICS
 Thomas Ryan, Assoc SCSi
 Austin Sammon, FSCSI, FRICS
 Eoin Sammon, MSCSI, MRICS
 George Saurin, MSCSI, MRICS
 Derry Scully, FSCSI, FRICS
 John Shannon, MSCSI, MRICS
 Graham Sheeran, MSCSI, MRICS
 John Sheils, MSCSI, MRICS
 Kevin Sheridan
 Sarah Sherlock, MSCSI, MRICS

Patrick Shine
 Samuel Smyth, FSCSI, FRICS
 Nigel V. Spence, FSCSI, FRICS
 Sarah Stafford, MSCSI, MRICS
 Peter Stapleton, FSCSI, FRICS
 Patricia Staunton, MSCSI, MRICS
 JD Stewart, FSCSI, FRICS
 Brendan Sweeny, FSCSI, FRICS
 Justin Travers, MSCSI, MRICS
 Gillian Tyrrell, MSCSI, MRICS
 John Vaudin, MSCSI, MRICS
 Martin Waldron, MSCSI, MRICS
 Alex Walsh, MSCSI, MRICS
 Noel Walsh, MSCSI, MRICS
 Stephen Walsh, MSCSI, MRICS
 Mark Wearen, MSCSI, MRICS
 John White, MSCSI, MRICS
 Glyn Williams, FSCSI, FRICS
 Gwen Wilson
 Sarah Winters, MSCSI, MRICS

IMPROVEMENT AND RENOVATION

INVESTMENT IN OUR FUTURE

T

his has been a year of significant improvement and review of how the Society best delivers on its strategic objectives for members. The major financial focus for this year has been on investments in the Society's premises and member relations management systems that will improve the overall member experience and offering. Additionally, the Board and the Finance Committee have reviewed the operational delivery of key functions such as education and regulation to ensure the Society is maximising the benefits for future and current members.

This year the Society invested over €550,000 in its premises and new systems. The result is a deficit for the year of €95,382. However, when viewed in the context of the past two years, overall there has been a surplus of €50,682 added to the members' reserves. The reserve policy is reviewed annually by the Board and Finance Committee to ensure that the Society is in a position to fulfil its commitment to members and the profession during the ups and downs of the industry.

On the next page, you will find a summary excerpt from the 2018 audited accounts, which were circulated in full ahead of the AGM and are available to all members.

Investing in the building

The Society's headquarters at 38 Merrion Square is a significant member resource. It is a beautiful Georgian building, which hosts committee meetings and CPD events. Through our investment in essential maintenance and installation of a heating system, the Society hopes it will be a

resource for all members – particularly those visiting Dublin. In addition to the direct cost, there was an increase in costs associated with hosting meetings while the building was unavailable. The team in Merrion Square hopes you will call in to see how your building has improved.

Investing in member systems

Improving the Society's focus on members requires good people and supporting systems. With over 300 members involved in committees and working groups, the Society benefits from a highly valuable resource – its members' knowledge and expertise. At the same time, this positive situation is reflected in the subscription income which has increased year on year by 2.5% in 2018 to €1,622,876. As the Society grows in membership, it is looking to technology to support service delivery to members. The launch in August of the new member portal will be a building block for all services – CPD logs, online courses, professional guidance, and profiling members to customers, etc.

Rethinking education

The Society has used feedback from the member survey and a review of education programmes it provides to better meet the needs of existing members and the next generation of surveyors. According to this research, there is a greater need by members for upskilling and courses that help them and their staff to uphold the highest standards. You'll see a great focus of resources put on courses aimed at professional members. Our review also found that staff shortages are a significant concern to the industry and members.

A comprehensive review of our two current approaches to education – accreditation and direct provision – was undertaken. The result was that to achieve the scale needed, the Society decided to leverage its academic partners more. The announcement in 2019 of new online programmes with IT Sligo and accreditation of IT Carlow courses is the start of this change with further exciting developments on the horizon.

Protecting the value of chartered

Regulation has an uncomplicated purpose – to protect. The Society, working with RICS, is concerned with protecting the public, but also in doing so protecting all those that rely on being chartered for their livelihood. Building trust and confidence in the profession is essential. For agents and auctioneers, the Society won a contract to deliver CPD on behalf of the Property Services Regulatory Authority (PSRA). For those on the Statutory Register, the Director of Regulation has been active in issuing legal notices to those using titles in contravention of the Building Control Act. Lastly, 2018 was the first full year of the Society employing a Professional Assurance Surveyor as the Irish link to the RICS Valuer Registration Scheme.

This is your Society. Members are at the heart of the Board and executives' focus. Thank you to all those who volunteer to support the work of the Society.



Alan Hardy
Honorary Treasurer

INCOME STATEMENT

Financial Year Ended December 31, 2018

	2018	2017
	€	€
Income	3,329,933	3,390,487
Expenditure	(3,417,995)	(3,244,727)
(Deficit)/surplus before interest	(88,063)	145,760
Other gains and losses	(9,167)	(1,905)
Finance income	1,847	2,209
(Deficit)/surplus for the year	(95,382)	146,064
Total comprehensive (expenses)/income	(95,382)	146,064

On behalf of the board

Desmond O'Broin
Johanna Gill

STATEMENT OF FINANCIAL POSITION

As at December 31, 2018

	2018	2017
	€	€
Non-current assets		
Property, plant and equipment	2,051,794	2,078,327
Investments	29,464	38,631
	<u>2,081,258</u>	<u>2,116,958</u>
Current assets		
Inventories	-	1,501
Receivables	589,918	285,818
Cash and cash equivalents	2,460,593	2,995,506
	<u>3,050,511</u>	<u>3,282,825</u>
Payables (amounts falling due within one year)	(1,073,493)	(1,246,125)
Net current assets	<u>1,977,019</u>	<u>2,036,700</u>
Total assets less current liabilities	<u>4,058,276</u>	<u>4,153,658</u>
Reserves		
Capital reserves and funds	2,424,979	2,424,979
Income statement	1,633,297	1,728,679
Total equity	<u>4,058,276</u>	<u>4,153,658</u>

On behalf of the board

Desmond O'Broin
Johanna Gill

WORKING WITH OTHER ORGANISATIONS

INTERNATIONAL BEST PRACTICE IS UTILISED BY MEMBERS ACROSS EVERY COUNTY OF IRELAND THROUGH THE SOCIETY'S ENGAGEMENT WITH A MYRIAD OF PROFESSIONAL BODIES.



The International Property Measurement Standards Coalition is made up of over 80 global organisations who all work together to agree a common method of measurement.



The International Valuation Standards Council is a not-for-profit organisation that acts as the global standard setter for the valuation profession, serving the public interest.



The *Fédération Internationale des Géomètres* (International Federation of Surveyors) is the premier international organisation representing the interests of surveyors worldwide.



The *Comité de Liaison des Géomètres Européens* (Council of European Geodetic Surveyors) represents the geodetic surveying profession in the private and public sector in Europe.



The International Consortium of Real Estate Associations comprises the world's leading real estate associations who believe in the right to own and transfer real property.



The *Conseil European des Economistes de la Construction* (European Council of Construction Economists) comprises various national institutions that represent quantity surveyors, with the aim of promoting the profession at a European level.



The *Association Européenne des Professions immobilières* (The European Association of Real Estate Professionals) is made up of 30 national associations throughout Europe, representing 350,000 estate agency and property management professionals.



The International Construction Measurement Standards Coalition seeks to establish a global standard for assessing project costs, by defining what should be included within the calculation of construction project costs, enabling global consistency.



The Residential Tenancies Board is a stakeholder group including other organisations such as Threshold, IPAV, landlords' associations, etc.



The Property Services Regulatory Authority is responsible for the control and supervision of property services providers (PSPs) in Ireland.



The Irish Green Building Council aspires to provide leadership to accelerate the rate of change in Ireland to a sustainable built environment.



The Construction Safety Partnership Advisory Committee comprises representatives from across the industry and seeks to promote continuous improvement in health and safety performance in the construction sector.



The Construction Industry Council is comprised of representatives of the six largest construction bodies in Ireland and has regular meetings with other professional bodies, Government and international stakeholders.



The Construction Industry Register Ireland is an official online register, supported by the Government, of competent builders, contractors, specialist sub-contractors and trades-persons who carry out construction work in Ireland.



The Construction IT Alliance was established as a research project in DIT Bolton Street, in association with Waterford Institute of Technology, in 2001, with the vision of harnessing the potential of ICT in the Irish construction industry.

OUR VALUES

DATING BACK TO 1895, THE SOCIETY OF CHARTERED SURVEYORS IRELAND IS THE INDEPENDENT PROFESSIONAL BODY FOR CHARTERED SURVEYORS WORKING AND PRACTISING IN IRELAND.



Working in partnership with RICS, the pre-eminent Chartered professional body for the construction, land and property sectors around the world, the Society and RICS act in the public interest: setting and maintaining the highest standards of competence and integrity among the profession; and providing impartial, authoritative advice on key issues for business, society and governments worldwide.

Advancing standards in construction, land and property, the Chartered Surveyor professional qualification is the world's leading qualification when it comes to professional standards. In a world where more and more people, governments, banks and commercial organisations demand greater certainty of professional standards and ethics, attaining the Chartered Surveyor qualification is the recognised mark of property professionalism. Members of the profession are typically employed in the construction, land and property markets through private practice, in central and local government, in state agencies, in academic institutions, in business organisations and in non-governmental organisations.

Members' services are diverse and can include offering strategic advice on the economics, valuation, law, technology, finance and management in all aspects of the construction, land and property industry. All aspects of the profession, from education through to qualification and the continuing maintenance of the highest professional standards are regulated and overseen through the partnership of the Society of Chartered Surveyors Ireland and RICS, in the public interest. This valuable partnership with RICS enables access to a worldwide network of research, experience and advice.

www.scsi.ie



Society of Chartered Surveyors Ireland
38 Merrion Square,
Dublin 2

(01) 644 5500
www.scsi.ie

THINKMEDIA.IE

